

An unmet health-related needs evidence database and research infrastructure to guide healthcare policy and innovation

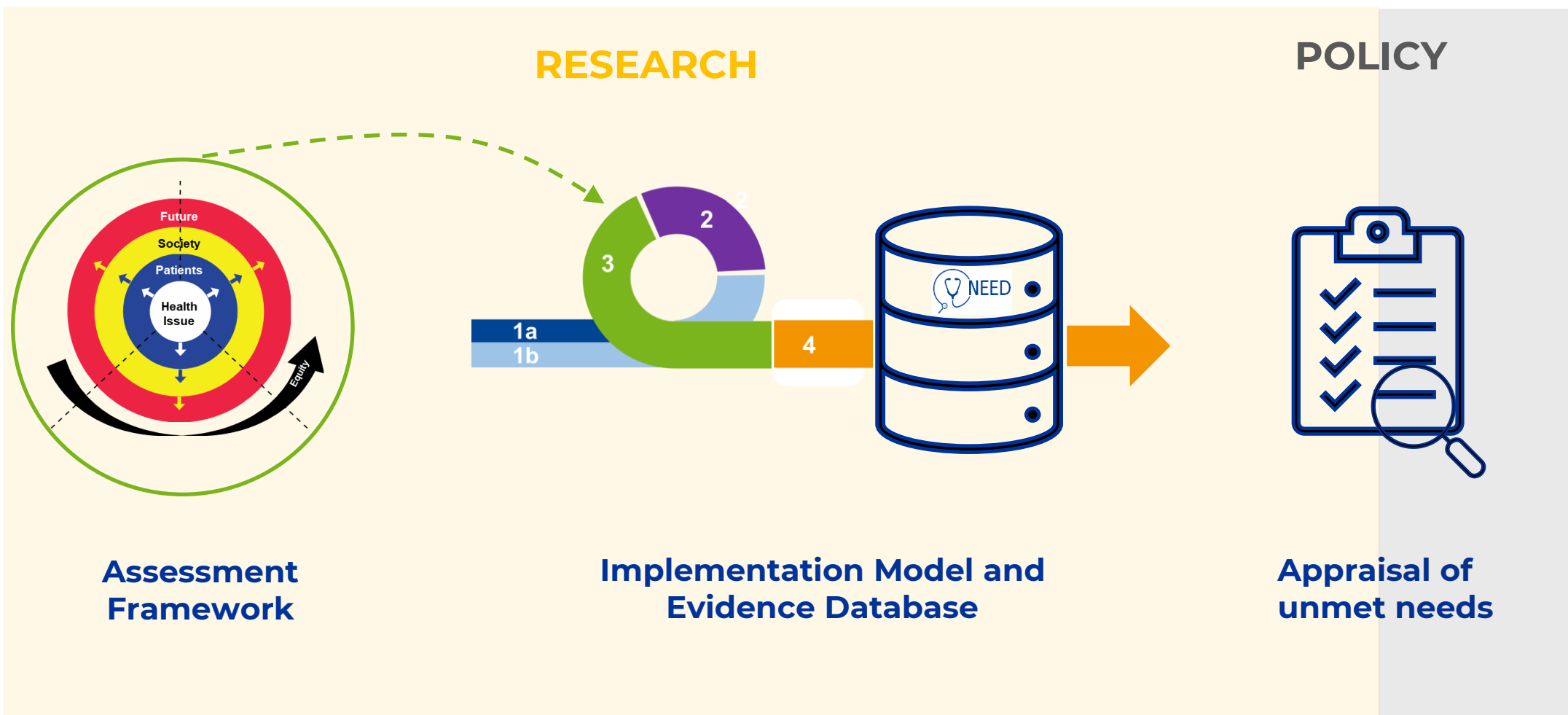
Background and objective

Background: No common definition of unmet needs → priorities not based on unmet needs → misalignment of innovation with public health needs

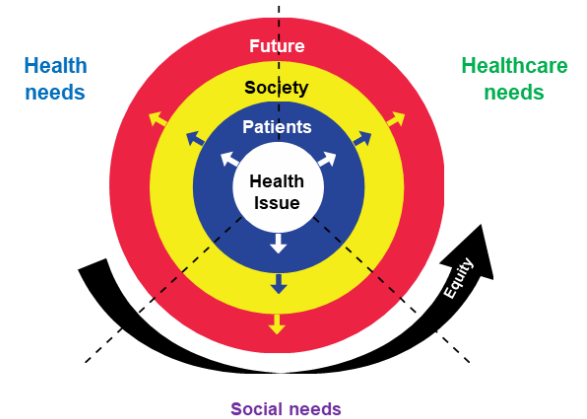
Aim: Move towards a more needs-driven healthcare policy and innovation

Objective: Develop, host and maintain an evidence database on patient and societal unmet needs in different health conditions

The NEED Approach: identification and measurement of unmet health-related needs



The NEED Assessment Framework: criteria



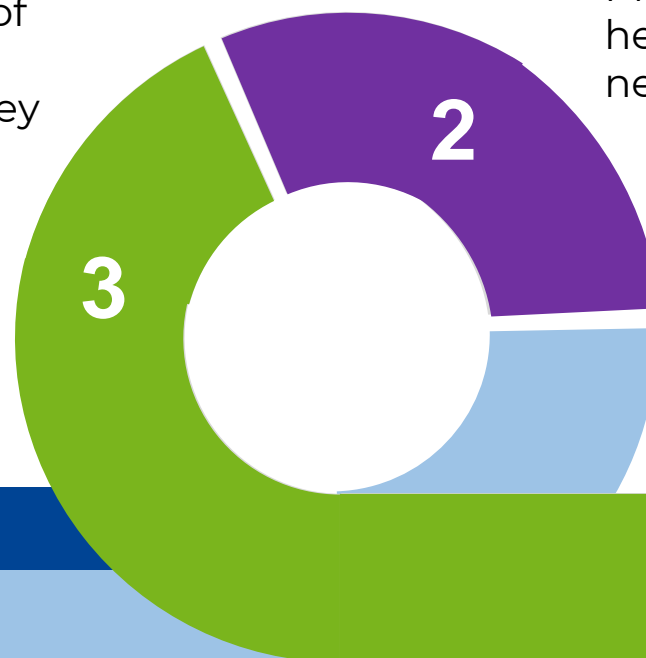
Dimensions

| | | Patients | Society | Future | Equity |
|---------|------------------|--|---|--|--------|
| Domains | Health needs | Impact on: <ul style="list-style-type: none"> Life expectancy General HRQoL Physical health Psychological health Autonomy | <ul style="list-style-type: none"> Frequency AMR Transmissibility Burden on informal caregivers | <ul style="list-style-type: none"> Future burden of disease | |
| | Healthcare needs | <ul style="list-style-type: none"> Effectiveness of Tx Quality of care Burden of Tx Accessibility | <ul style="list-style-type: none"> Preventability Value for money of standard of care | <ul style="list-style-type: none"> Future economic burden | |
| | Social needs | Impact on: <ul style="list-style-type: none"> Social life Education Work Financial consequences | <ul style="list-style-type: none"> Productivity losses Environmental impact of standard of care | | |

Populating the NEED database: 4-step implementation model

Evidence collection on the criteria of the NEED framework: review of literature & databases, patient survey & interviews, expert opinion

Prioritisation and selection of health conditions for unmet needs research



Identification of health conditions for unmet needs research

- Existing databases
- Call for proposals: from patients, healthcare providers, general public

1a

1b

3

2

4

Dissemination of unmet needs evidence

The NEED database: example of output

NEED > NEED Database Info Indicators Table

DB settings

Select the condition: CRO

Select the dimension: Health

Select the criterion: YLD, EQ-5D, Associated comorbidities, Impact on mortality, Ex

DB filters

Filter on country: BE

Filter on sex: ALL

Filter on age: ALL

Show 10 entries Search:

| | DISEASE | REGION | YEAR | SEX | AGE | SES | INDICATOR | RATING | ICON |
|----|---------|--------|------|-----|-----|-----|---|--------|------|
| 1 | CRO | BE | 2022 | ALL | ALL | ALL | YLD | HIGH | 🔴 |
| 2 | CRO | BE | 2022 | ALL | ALL | ALL | EQ-5D | LOW | ✅ |
| 5 | CRO | BE | 2022 | ALL | ALL | ALL | Associated comorbidities | MEDIUM | ⚠️ |
| 11 | CRO | BE | 2022 | ALL | ALL | ALL | Experienced burden of physical symptoms related to the health issue | LOW | ✅ |
| 32 | CRO | BE | 2022 | ALL | ALL | ALL | Pain/Discomfort | MEDIUM | ⚠️ |
| 47 | CRO | BE | 2022 | ALL | ALL | ALL | Years of Life Lost (per death) | HIGH | 🔴 |

Showing 1 to 6 of 6 entries Previous 1 Next

NEED > NEED Database Info Indicators Table

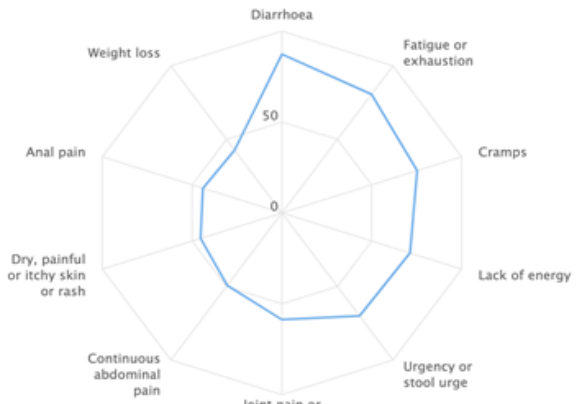
Chart settings

Select the condition: CRO

Select the dimension: Health

Select the criterion: Experienced burden of physical symptoms related to the health

Chart filters



NEED research infrastructure: activities



Coordination



Standardisation of
research methods



Training



**Evidence
Database**



Data collection

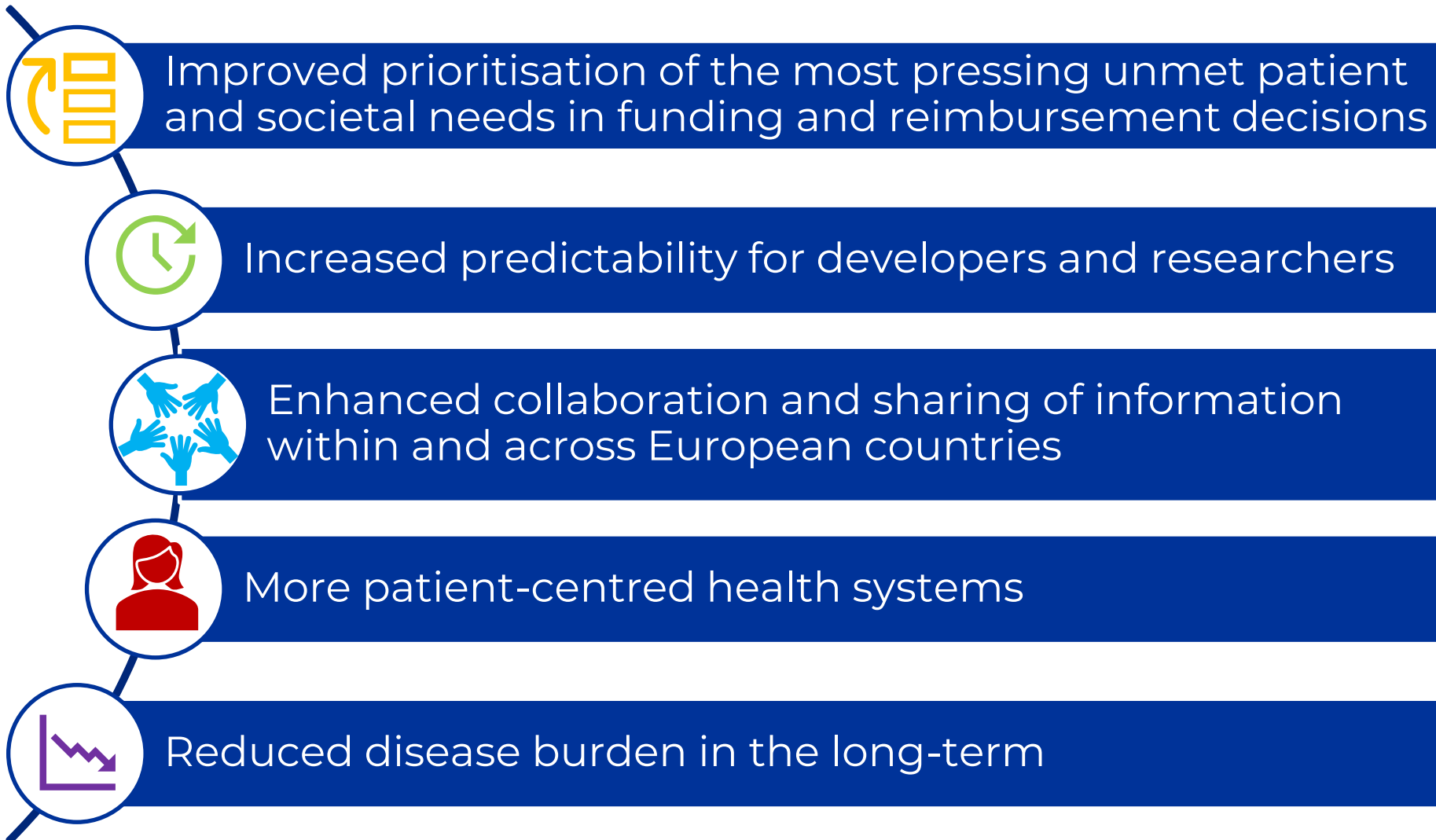


Maintenance



Dissemination

Expected impact of the **NEED** database and research infrastructure



**Thank you for your
attention !**



<https://www.health-needs.eu>