

EHMA 2024

Shaping and managing
innovative health ecosystems

The PHM-MI: Inspiring local health systems to improve population health

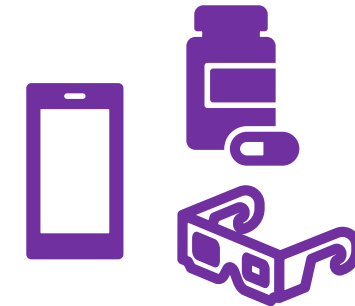
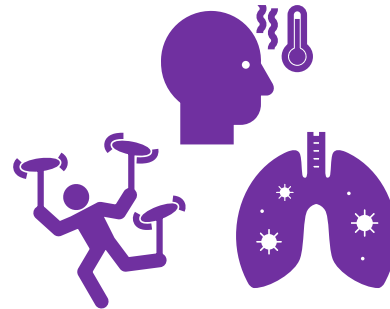
Annefrans van Ede MSc PharmD, Health Campus The Hague – Leiden
University Medical Center, the Netherlands

5 – 7 June 2024 – Bucharest, Romania

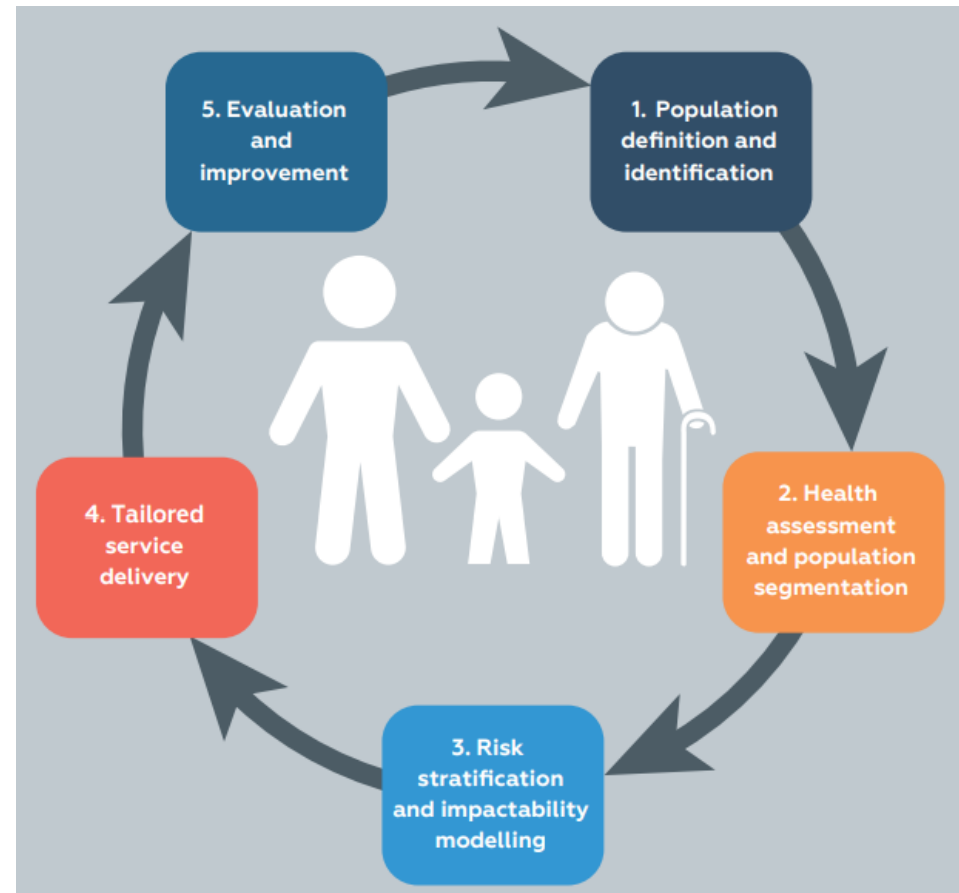
Politehnica University of Bucharest, Bucharest, Romania

#EHMA2024

The big challenges in healthcare



Population Health Management



Population health management in primary health care: a proactive approach to improve health and well-being. Primary health care policy paper series. Copenhagen: WHO Regional Office for Europe; 2023.

From research theory to practice

The implementation of PHM: What to do (first)?

- Research 1: Literature review -> USA, Canada, Germany, the Netherlands
- Research 2: Delphi rounds -> panelist from the Netherlands and validation by (mainly) European panel
- Research 3: Putting it in practice -> pilot project Australia
- Research 4: Action research in a Dutch change initiative

Where to start depends...

PHM Maturity Index:

6 elements of PHM

101 items

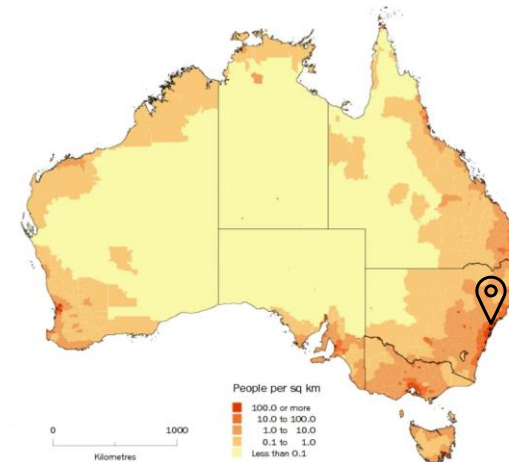
Regional maturity

Priority population



The PHM Maturity Index is positioned to support the strategic prioritization and planning of the transformation journey

- Assesses regional maturity
- Highlighting potential gaps in knowledge and expertise availability
- Stresses strategic opportunities



As international adoption of the tool grows, we will be able to compare local health systems within and between countries



Personal learnings

- Use of language
- Quality of research methodologies
- Experience abroad

Bibliography PhD:

- van Ede, A.F.T.M., Minderhout, R.N., Stein, K.V., Bruijnzeels, M.A.. How to successfully implement population health management: a scoping review. *BMC Health Serv Res* 23, 910 (2023).
- van Ede, A.F.T.M., Stein, K.V. & Bruijnzeels, M.A.. Assembling a population health management maturity index using a Delphi method. *BMC Health Serv Res* 24, 110 (2024).
- van Ede, A.F.T.M., Goodwin, N., Bruijnzeels, M.A., Stein, K.V.. Assessing the strengths and weaknesses for implementing a place-based model of care for older people on the Central Coast, Australia: results of a pilot project using the Population Health Management Maturity Index (PHM-MI) tool. Submitted 20-12-2023 to *International Journal of Integrated Care* (in review)
- van Ede, A.F.T.M., Bruijnzeels, M.A., Numans, M.E., Stein, K.V.. Exploring the role of an initiator in a Population Health Management initiative: Insights from action research. Submitted 29-03-2024 to *Journal of Integrated Care* (provisionally accepted)
- Van Ede, A.F.T.M., Bruijnzeels, M.A., Stein K.V.. Integrated care vs population health management. Invited editorial for the *International Journal of Integrated Care*. Upcoming edition 2024.



EHMA 2024

Shaping and managing
innovative health ecosystems

Which strategy do you choose?

Annefrans van Ede MSc, Health Campus The Hague – Leiden University
Medical Center, the Netherlands
a.f.t.m.van_edel@lumc.nl