

# EHMA 2024

Shaping and managing  
innovative health ecosystems

**Developing diabetes and severe mental health disorders  
dashboard for informed decision-making, managerial  
insights, and optimizing health system effectiveness**

**MD, PhD, eMBA, Adjunct Professor Pirjo Laitinen-Parkkonen  
Director of Medical Services, Director of Research and Development  
Wellbeing services county of Central Uusimaa, Finland**

RN, PhD Elina Laukka, MSc Katja Nolvi, MSc Olli Tolkki, MSc Vesa Komssi

5 – 7 June 2024 – Bucharest, Romania

Politehnica University of Bucharest, Bucharest, Romania

#EHMA2024

# Background

- In its strategic value-based steering model, the wellbeing services county of Central Uusimaa (Keusote) has opted two initiative diagnostic value-based pilots:
  - Diabetes pilot (~15 000 patients)
  - Severe mental health disorders pilot (SMHD, ~1600 patients)
- The prevalence of both diabetes and SMHD is projected to increase in the coming years, both in Finland and globally, leading to significant societal and economic burdens.

# Establishing Wellbeing services county of Central Uusimaa (Keusote)

## Background

- Previously 6 municipalities and hospital district → 2018 joint municipal authority for health and social services → 2023 wellbeing services county.
- Keusote is responsible for the **provision of health and social services** and the **coordination of rescue services** and **specialized medical care**. We have 4200 employees.
- A wellbeing county is a **regionally autonomous** health authority. They **get most of their funding from the central government** but also have some independent income from fees and charges. The **highest decision-making body is a county council**, whose members are elected through county elections.



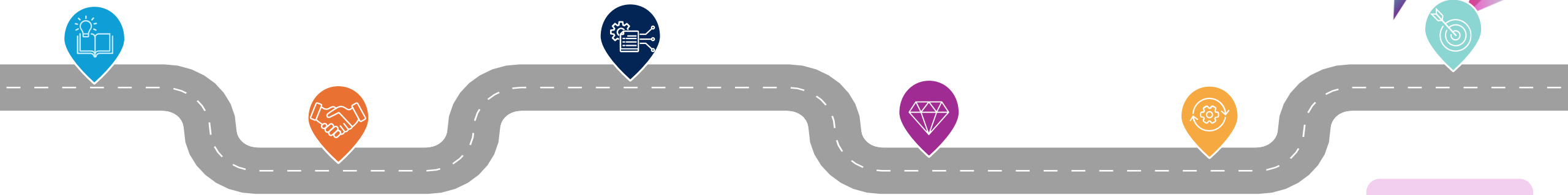
## Basic information

- 200 000 inhabitants
- 1 716 km<sup>2</sup>
- Consists of: Hyvinkää, Järvenpää, Mäntsälä, Nurmijärvi, Pornainen and Tuusula

## Services:

primary health care	social welfare	services for elderly people	coordinating rescue services
Promotion of wellbeing and health	services for children, adolescents and families	mental health and substance abuse services	coordinating specialized medical care
school and student welfare	services for working-age people	services for people with disabilities	

# Keusote's journey towards value-based healthcare and social services during the period 2023-2025



**2016-2022**

---

**Background work, implementation, learning, and development of understanding.**

**Strong strategic commitment**

---

- A paradigm shift towards value-based approaches has occurred.
- The foundation for guiding value-based healthcare has been established.

**Value-based healthcare supported by data**

---

- Framework and data foundation have been defined.
- Information systems are suitable for collecting outcome measurement data.

**Organizational structure supporting value-based guidance**

---

- Service chain thinking is embedded in Keusote.
- Interfacing work and network governance support value-based approaches.

**Organizer's governance model**

---

- The components of a value-based governance model are in place.
- Organizer's guidance is impact-based.

**2025**

**Overall objective**

---

Value-based organization and service production management

Description of value-based guidance

The value-based work continues and further strengthens the value-based organization at Keusote

Effectiveness pilots (diabetes, mental health, elderly)



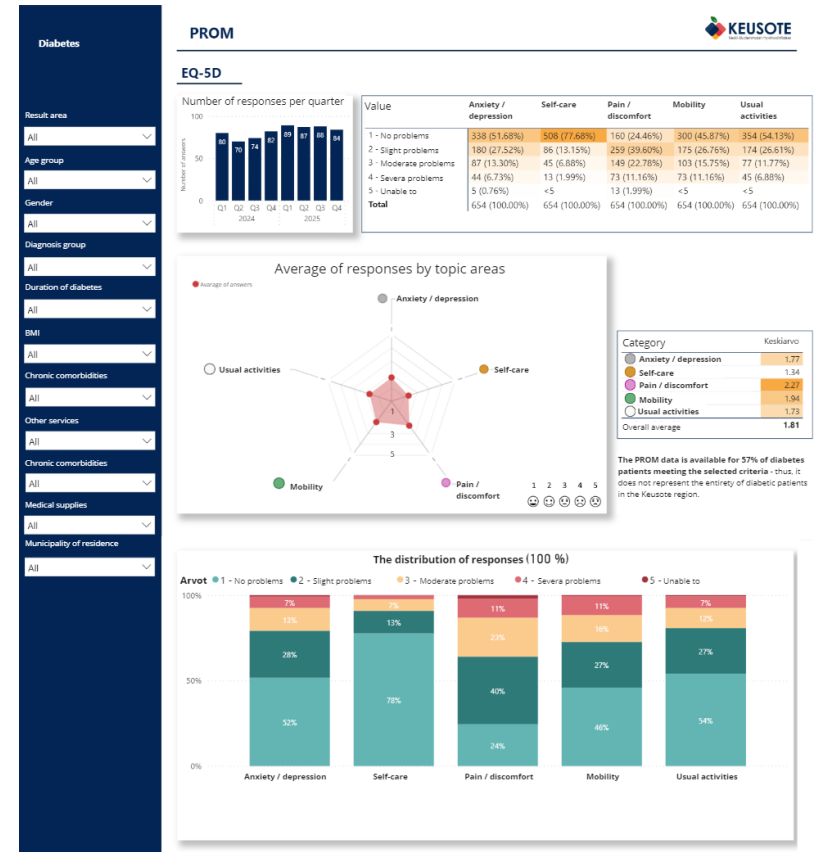
# Methods

- Leveraging the International ICHOM framework for diabetes and severe mental health disorders, our primary **objective is the development and implementation of a comprehensive dashboard for both diabetes and severe mental health disorders.**
- Workshops were conducted involving the special healthcare experts involved in the treatment of these diseases (specialists and nurses) and the management level. Treatment recommendations and national initiatives are also being adhered to when selecting measurements.
  - Diverse use cases were identified to ascertain the specific purposes of dashboards.
  - A need to incorporate patient-reported outcomes measures (PROM) and clinician-reported outcomes measures (CROM) was identified.
  - In the case of SMHD, the dashboard view is shared between primary care (Keusote) and specialty care, the psychiatry clinic of Hyvinkää hospital of Helsinki and Uusimaa hospital district (HUS).

# Results

- Through the deployment of these disease specific dashboards, we anticipate providing policymakers, healthcare professionals, and patients in wellbeing services county with a dynamic and data-driven tool for **informed decision-making, proactive care management, and the continuous improvement of diabetes and SMHD outcomes within the population.**
- Gaining understanding of both **PROM and CROM in the included patient groups.**
- In addition, **recognizing the ICHOM framework as a useful tool** in the development of the diabetes and SMHD dashboard not only underscores the initiative's commitment to robust methodology but also positions the resulting tool within a broader global context of best practices in health outcomes measurement.

An example from diabetes dashboard



# Discussion

- The proposed dashboards, developed through collaborative efforts and incorporating patient-reported outcomes, are positioned **to be a valuable asset in addressing the challenges posed by the selected diseases within the population** of the wellbeing services county.
- Foremost, with Finland undergoing a significant health and social care reform and adapting to a new financial model, these **dashboards may facilitate the delivery of cost-effective care**.
- The emphasis on informed decision-making and ongoing improvement **indicates a proactive and comprehensive approach to diabetes care and the management of severe mental health disorders** in Finland.
- Following the pilot phase, **the insights derived from the pilot programs will be incorporated into the development of an effectiveness steering model**.



# EHMA 2024

Shaping and managing  
innovative health ecosystems

# Thank you!

MD, PhD Pirjo Laitinen-Parkkonen, Wellbeing services county of Central  
Uusimaa

[pirjo.laitinen-parkkonen@keusote.fi](mailto:pirjo.laitinen-parkkonen@keusote.fi)